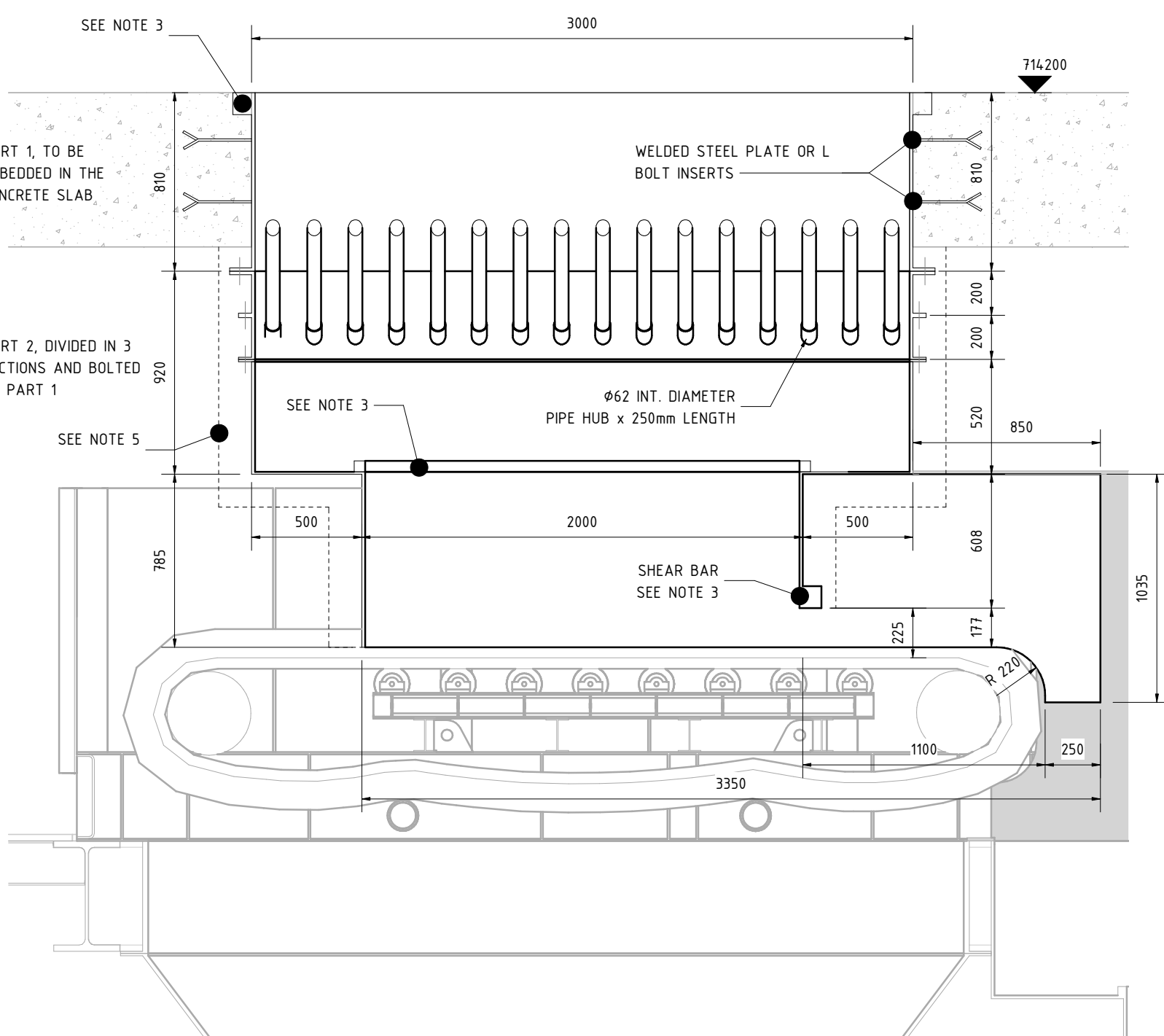
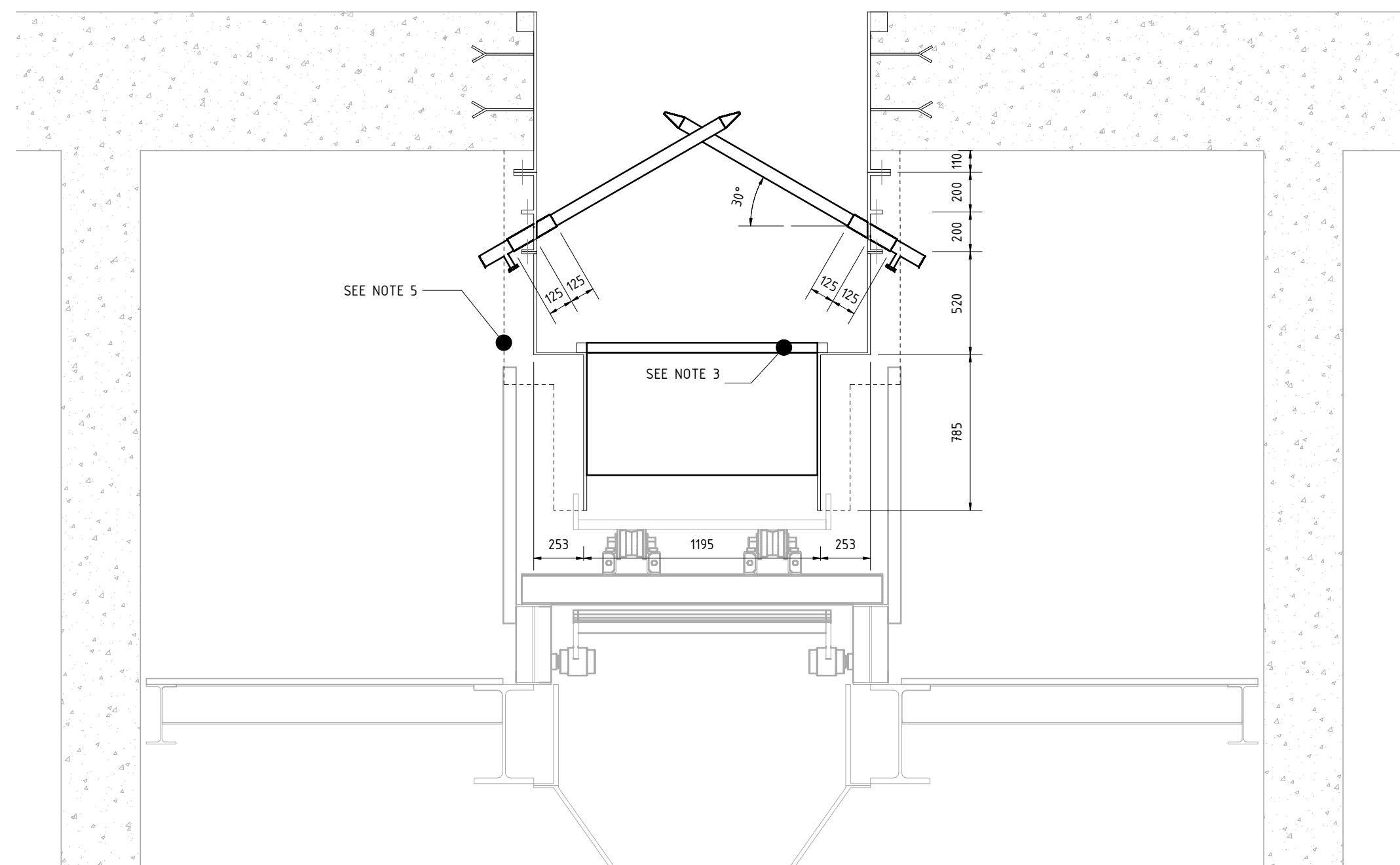


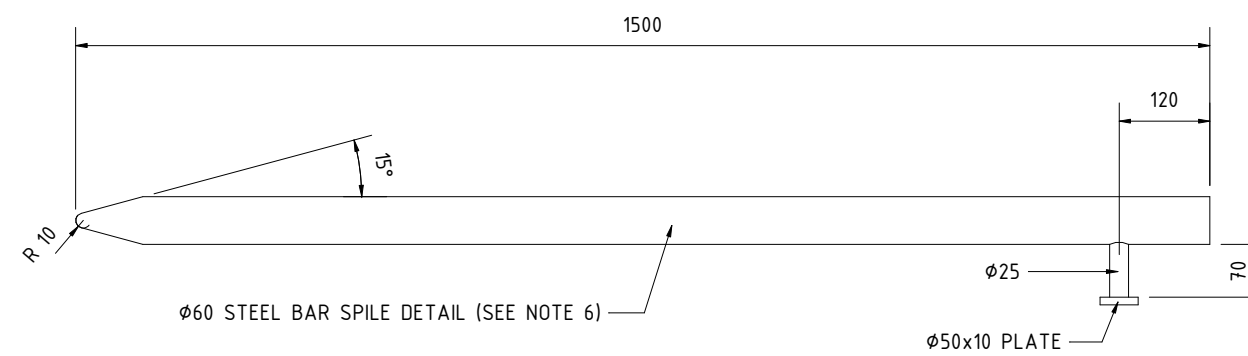
FRONT VIEW  
1: 25



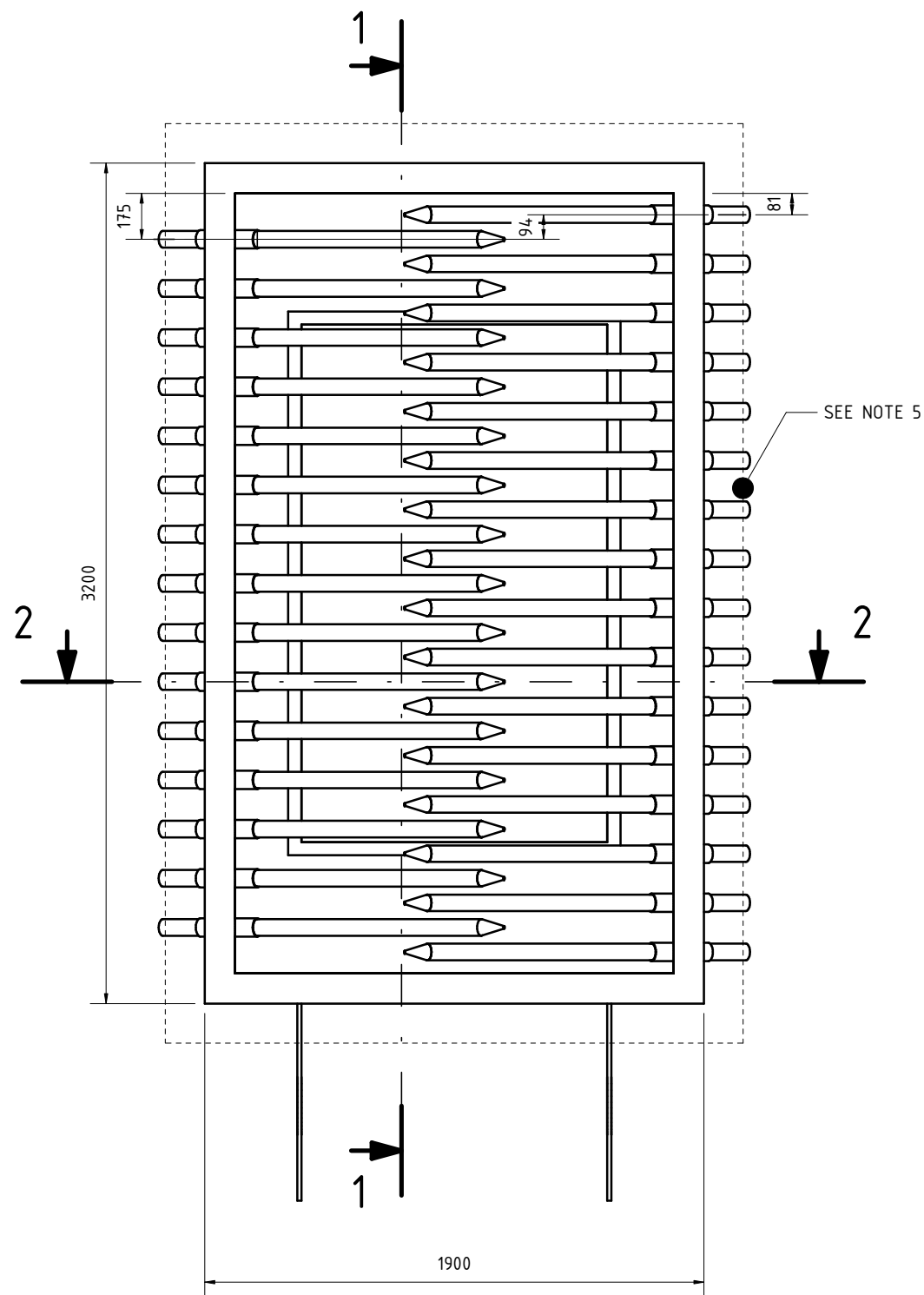
SECTION 1-1  
1: 25



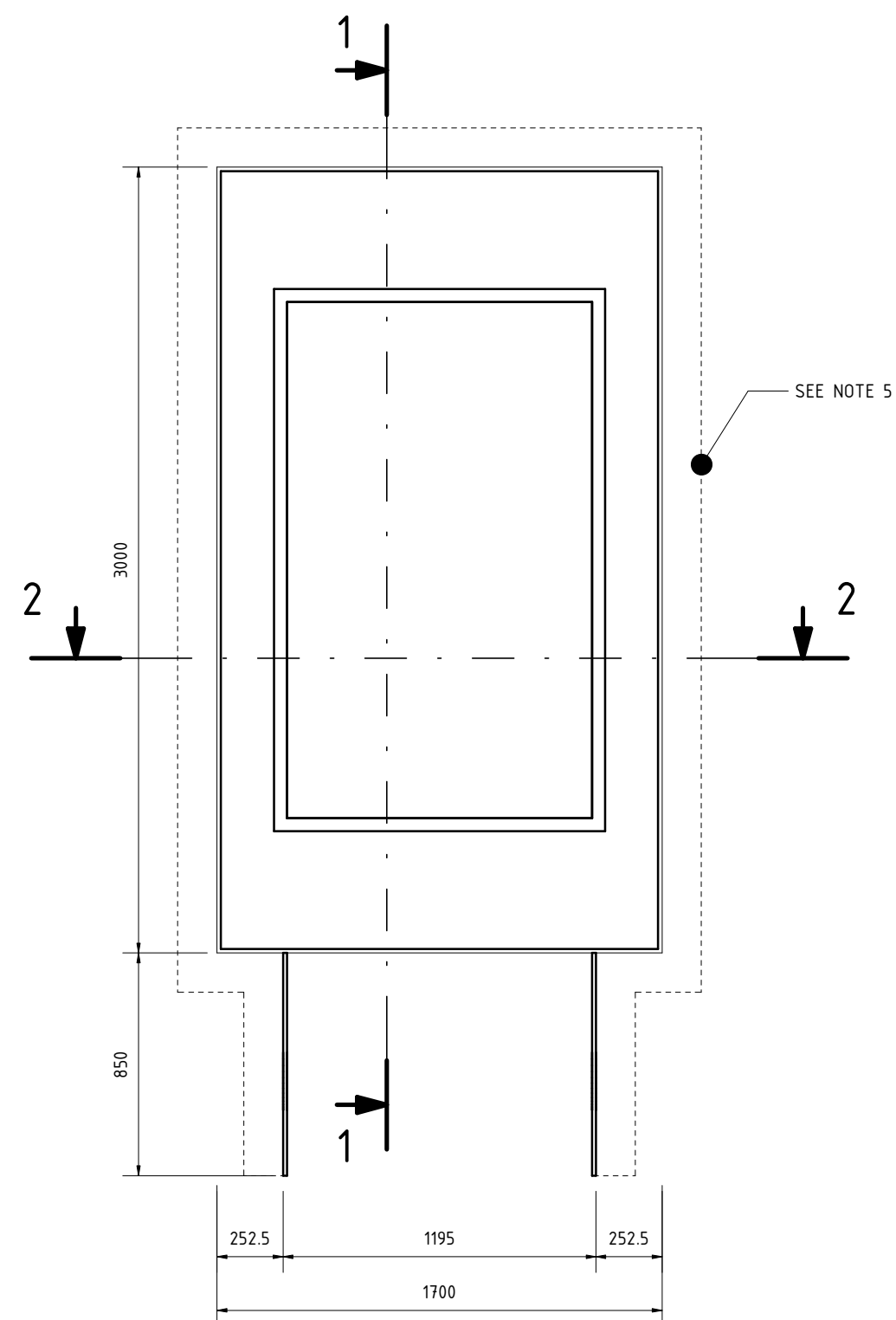
SECTION 2-2  
1: 25



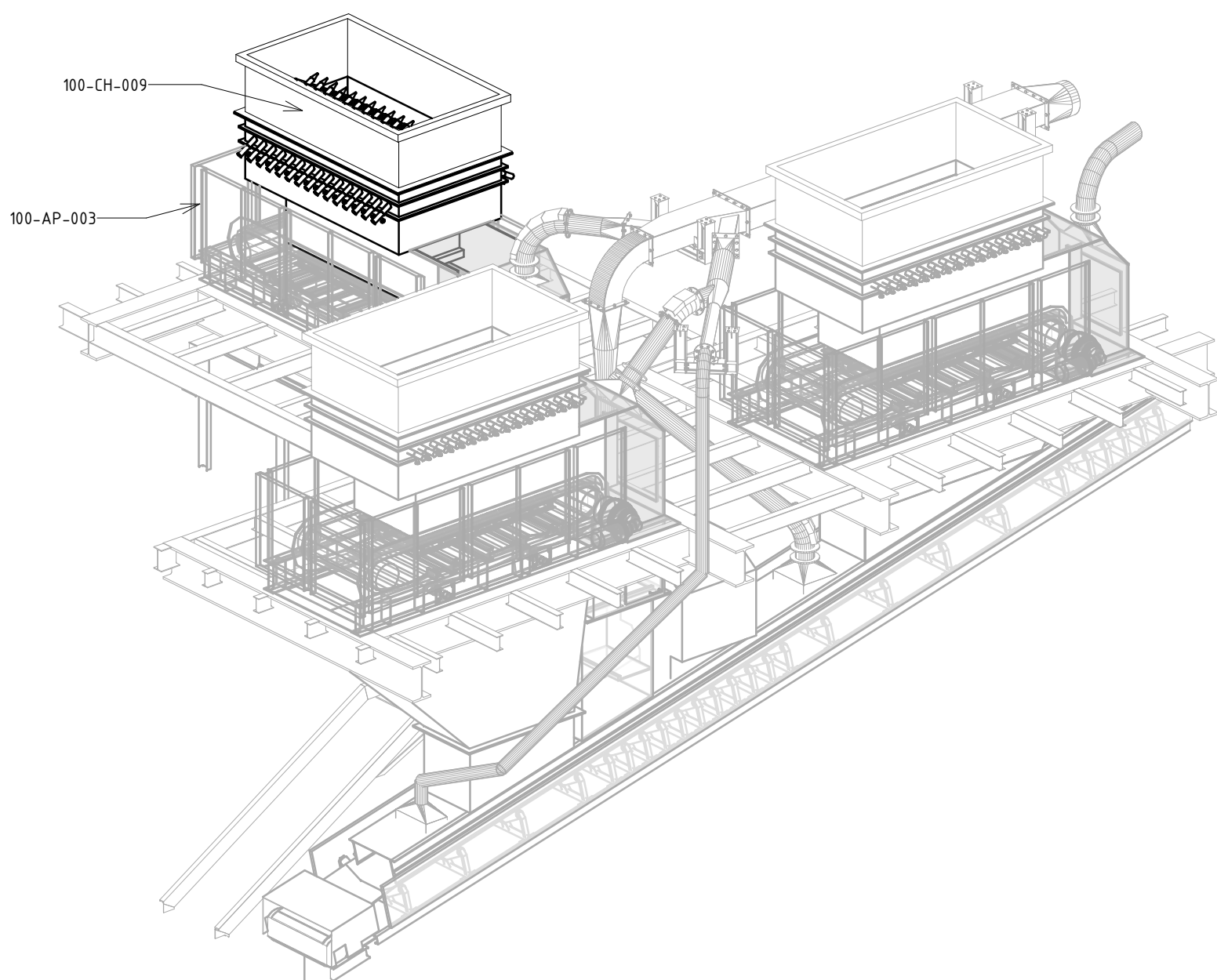
STEEL BAR SPILE DETAIL  
1: 10




PLAN VIEW  
1: 25



VIEW A  
1: 25



- Notes:
- 1) FOR DETAIL DESIGN PURPOSES, NOT FOR CONSTRUCTION.
  - 2) THIS DRAWING HAS BEEN PRODUCED WITH THE DIMENSIONS PROVIDED BY PROCESS DESIGN ENGINEERING TO INTEGRATE THE EQUIPMENT IN THE 3D MODEL, AND WITH THE EXCEPTION OF THE DIMENSIONS SHOWN THAT ARE CONSIDERED FIXED, THE REST OF DIMENSIONS AND MATERIAL SPECIFICATION THAT ARE REQUIRED FOR THIS EQUIPMENT TO WORK SAFELY AS PER PROCESS REQUIREMENTS ARE TO BE DEFINED BY EQUIPMENT DETAIL ENGINEERING AND FABRICATION SUPPLIER/MANUFACTURER.
  - 3) TO INCLUDE WEAR BAR ON ROCK BOX BORDER, SECTION T.B.C. (MAX. 70x70)
  - 4) THIS DRAWING SHOWS ONLY BASIC AND FUNCTIONAL DIMENSIONS. STEEL PLATES THICKNESS, REINFORCING, BASE PLATES AND STIFFENERS TO BE ADDED.
  - 5) - - - - DASHED LINE DENOTES THE CONTOUR LIMIT OF THE STIFFENERS IN ORDER TO AVOID CLASHING WITH THE REST OF ELEMENTS OF THE PLANT.
  - 6) SPILE BAR GATE DESIGN TO BE CHECKED WITH WORST MATERIAL PROPERTIES.
  - 7) SPILES TO BE DRIVEN BY HAMMER AND EXTRACTED BY HOIST OR BY DEDICATED HYDRAULIC SYSTEM.

0	MRF	10/11/2022	ATB	10/11/2022	ATB	10/11/2022	FOR DETAIL ENGINEERING
Rev.	Author/Date		Checked/Date		Approved/Date		Preliminary
Customer: JSC RMG Auramine LLC					Project:  BEQTAQARI DETAIL ENGINEERING		
					Title:  100-CH-009 DIMENSIONAL DRAWING APRON FEEDER FEED CHUTE		
					3d model: P1384-100-RV-120-10-stockpile Customer doc. code:		
Area: 100					Scale: 1:25		Format: A1
100					Doc. code: P1384-100-EQ-010		
							Rev: 0